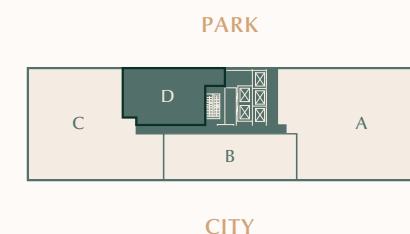
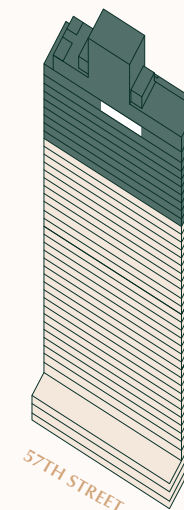


# ONE11 RESIDENCES

AT THOMPSON CENTRAL PARK

## PENTHOUSE D

FLOOR 42  
1,219 SQ.FT. | 113SQ.M.  
1 BEDROOM | 1 BATHROOM  
1 POWDER ROOM

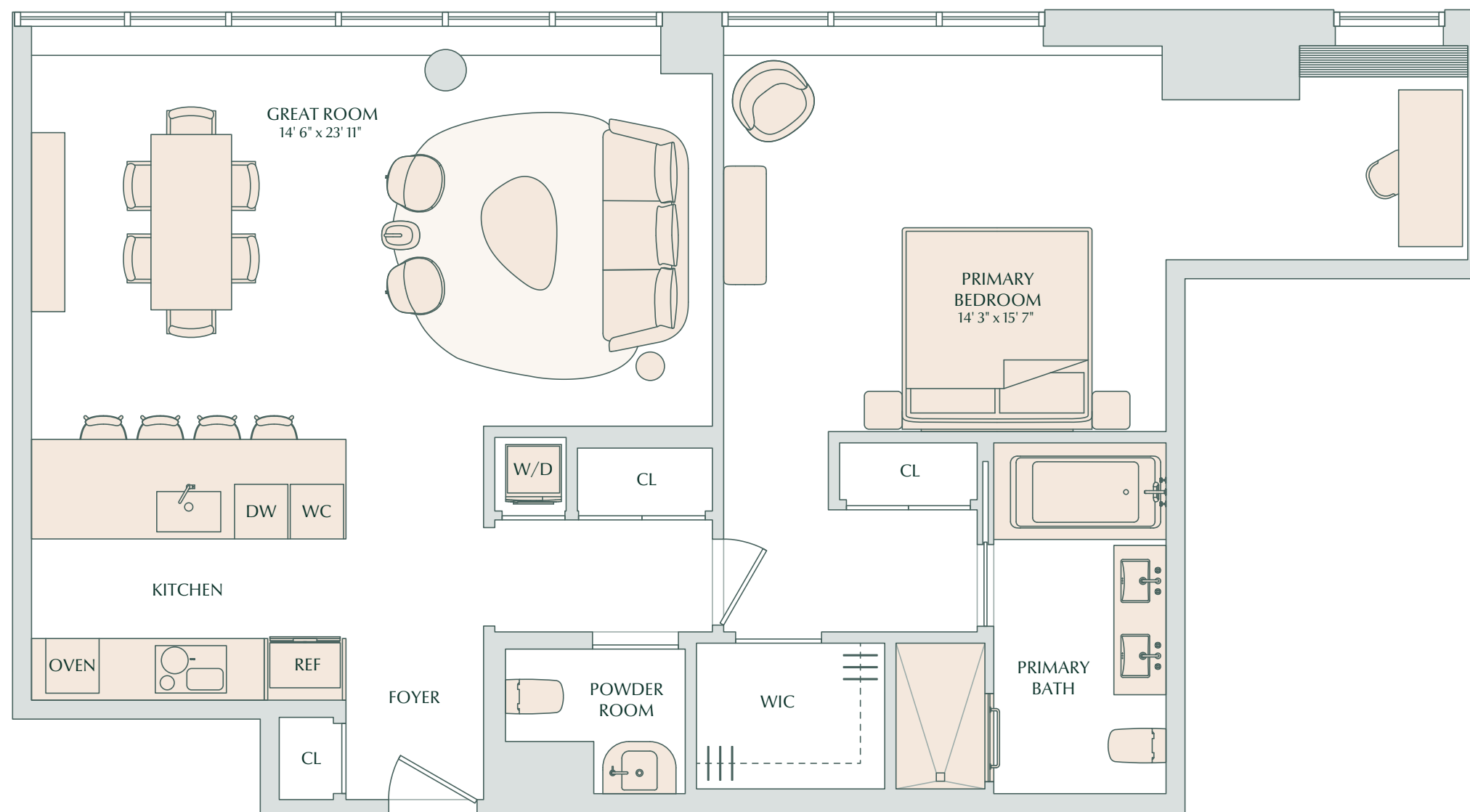


212.561.5600

INFO@ONE11RESIDENCES.COM

ONE11RESIDENCES.COM

111 WEST 56TH STREET,  
NEW YORK, NY 10019



THE COMPLETE OFFERING TERMS ARE IN AN OFFERING PLAN FROM SPONSOR, PARKER57 LLC, C/O GFI CAPITAL RESOURCES GROUP, INC., 140 BROADWAY, 41ST FLOOR, NY, NY 10005, UNDER NEW YORK STATE DEPARTMENT OF LAW FILE NO. CD22-0055. All artist's renderings are for representational purposes only and subject to variances. Finishes depicted in artist's rendering are not necessarily indicative of what will be specified in the offering plan and not all items depicted in artist's rendering are included in unit purchase. All renderings of views and exposure to light are for representational purposes only and subject to variances. View renderings and exposures to light shown for a particular floor plan may be reflective only of the direction in which the Unit shown on such floor plan faces, and actual views and exposures to light for a particular Unit may vary depending upon the floor on which such Unit is located. Sponsor makes no representations as to any view and/or exposure to light at any time or as the same may be affected by any existing or future construction by either Sponsor or a third party. All dimensions are approximate and subject to normal construction variations and tolerances. Plans and dimensions may contain minor variations from floor to floor. Total Unit square footage has been determined using the methodology described in the Offering Plan. Plans and dimensions may contain minor variations from floor to floor. Total Unit square footage has been determined using the methodology described in the Offering Plan. Plans and dimensions may contain minor variations from floor to floor. Total Unit square footage has been determined using the methodology described in the Offering Plan. Sponsor reserves the right to make changes in accordance with the terms of the Offering Plan. Equal Housing Opportunity.

Exclusive Marketing and Sales: Douglas Elliman Development Marketing