

DISTANCES

• GRAND CENTRAL TERMINAL 10 MIN

• KOREATOWN 5 MIN

• FLATIRON 10 MIN

• HIGHLINE 18 MIN

• CENTRAL PARK 22 MIN

• LAGUARDIA AIRPORT 22 MIN

• JFK AIRPORT 25 MIN

A stylized, hand-drawn map of Midtown Manhattan. The map is oriented with the East River on the right. Key landmarks include the Empire State Building, Chrysler Building, Grand Central Terminal, United Nations Headquarters, and Flatiron Building. Streets shown include 5th Avenue, Park Avenue, 34th Street, 33rd Street, 32nd Street, 31st Street, and 30th Street. The map also depicts the East River, the Queens-Midtown Tunnel, and various parks like Central Park and St. Vartan Park. A small inset box in the bottom left corner provides distances to various locations. The map is rendered in a simple, illustrative style with black outlines and some color accents.

609

SECOND AVE.

UNIT 1404

FLOOR 14

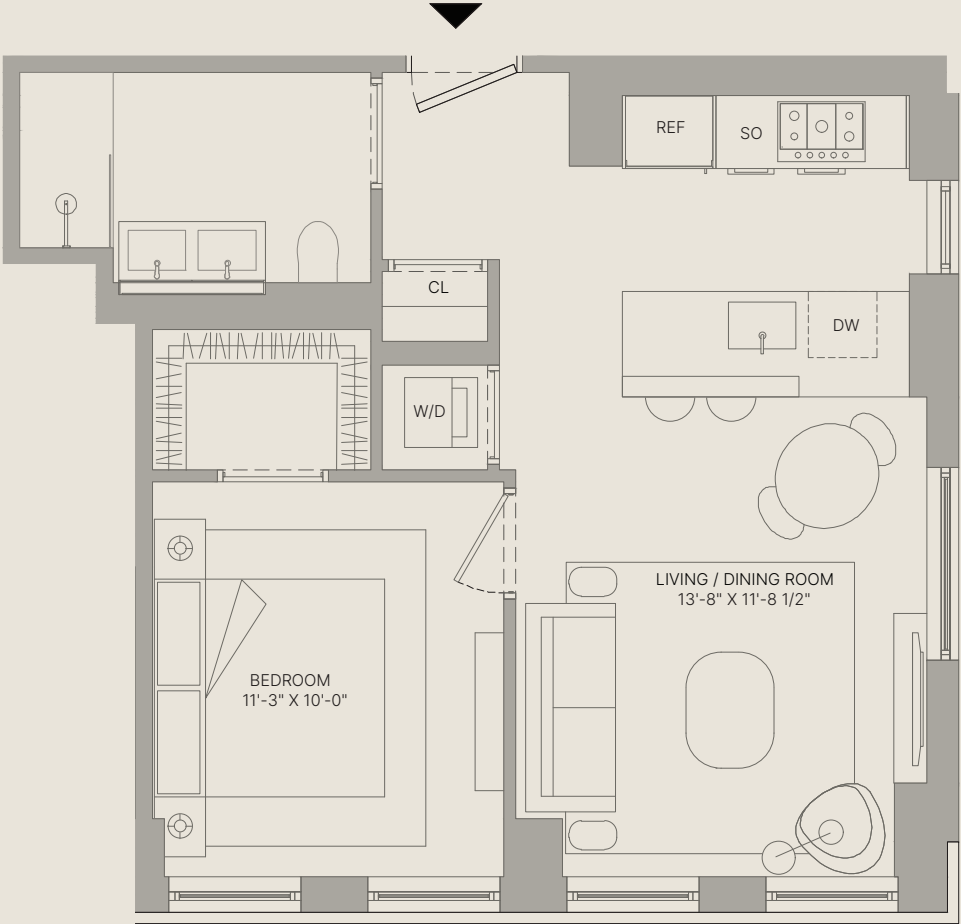
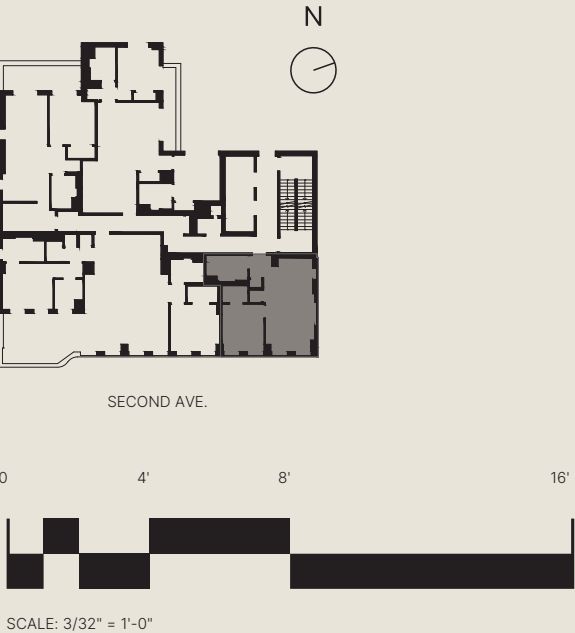
UNIT 1404

FLOOR 14

Bedroom

Bathroom

Interior 596 SF



609
SECOND AVE.

609secondave.com

(212) 601-2609

info@609secondave.com

609 Second Ave, New York, NY 10016

The complete offering terms are in an offering plan from Sponsor, FLAT LG LLC, ELEM 340 LLC, RC FLATBUSH LLC, 1481 47th street Brooklyn, NY 11219, under New York State Department of Law File No. CD23-0304. Sponsor makes no representations as to any view and/or exposure to light at any time or as the same may be affected by any existing or future construction by either Sponsor or a third party. All dimensions are approximate and subject to normal construction variations and tolerances. Plans and dimensions may contain minor variations from floor to floor. Total Unit square footage has been determined using the methodology described in the Offering Plan. Furniture depicted herein is for demonstration purposes only. Sponsor reserves the right to make changes in accordance with the terms of the Offering Plan. Equal Housing Opportunity.
Exclusive Marketing and Sales: Douglas Elliman Development Marketing

