



CEDARBROOK



TOWNHOMES

*liveat*CEDARBROOK.ca



# TOWNHOMES

## SITE MAP



702 A3 SOLD  
703 A3 SLOW HOME

734 B3 SOLD  
733 B3 SOLD

736 B2  
737 B3 SOLD  
SOLD



 **HAWTHORN**  
TOWNHOMES

 **FOXFERN**  
TOWNHOMES



# TOWNHOMES

## BUILDING 1



UNIT	FLOOR PLAN	BED	BATH	SQ. FT.
<b>SOLD</b> 701	<b>A1</b>	3 + DEN	2.5	1,625
702	<b>A3</b>	3 + DEN	2.5	1,543
703	<b>A3</b>	3 + DEN	2.5	1,550
<b>SHOW HOME</b> 704	<b>A2</b>	3 + DEN	2.5	1,589

## BUILDING 9



UNIT	FLOOR PLAN	BED	BATH	SQ. FT.
<b>SOLD</b> 732	<b>B2</b>	3 + REC	2.5	1,719
733	<b>B3</b>	3 + REC	2.5	1,668
734	<b>B3</b>	3 + REC	2.5	1,665
<b>SOLD</b> 735	<b>B1</b>	3 + REC	2.5	1,749

## BUILDING 10



UNIT	FLOOR PLAN	BED	BATH	SQ. FT.
736	<b>B2</b>	3 + REC	2.5	1,704
737	<b>B3</b>	3 + REC	2.5	1,670
<b>SOLD</b> 738	<b>B3</b>	3 + REC	2.5	1,663
<b>SOLD</b> 739	<b>B2</b>	3 + REC	2.5	1,707



# TOWNHOMES

## FLOOR PLANS

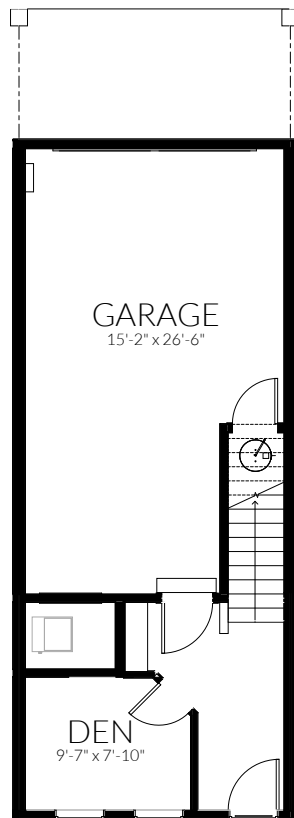
A3

3 + DEN  
BED

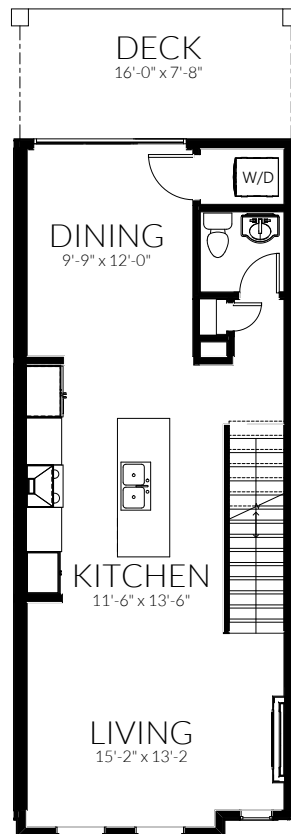
2.5  
BATH

1,543  
SQ FT.

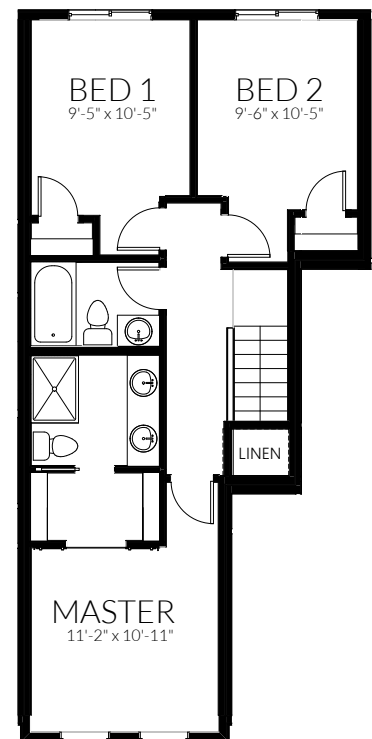
MIDDLE UNIT



ENTRY



MAIN FLOOR



UPPER FLOOR

Unit 702 displayed  
Layouts will vary. Ask sales associate for details.

All images used are for illustrative purposes only and are intended to convey the concept and vision for the development/apartments/houses. They are for guidance only, may alter as work progresses and do not necessarily represent a true and accurate depiction of the finished product. All images and dimensions are not intended to form part of any contract or warranty. All measurements are approximate. Ask sales associate for more details.





# TOWNHOMES

## FLOOR PLANS

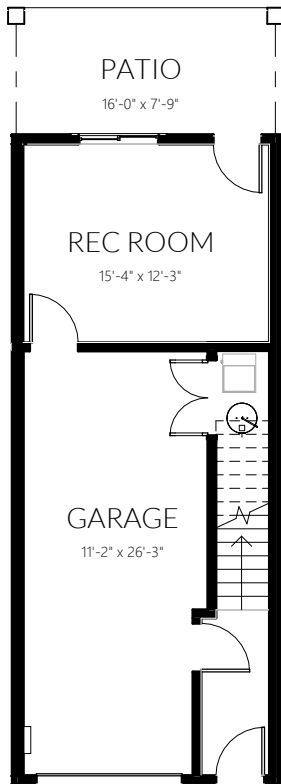
**B3**

**3 + REC**  
BED

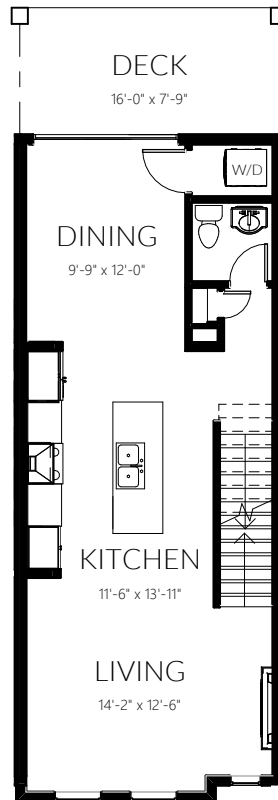
**2.5**  
BATH

**1,665**  
SQ. FT.

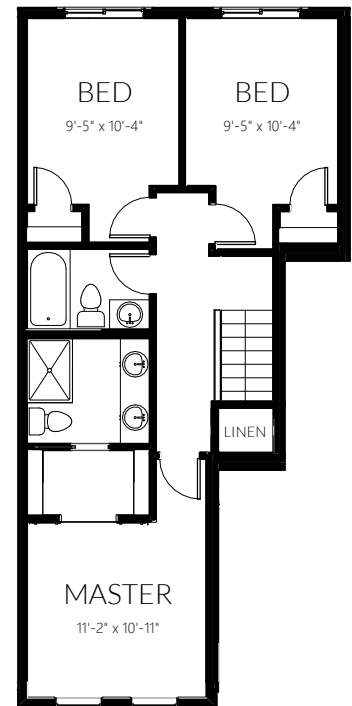
MIDDLE UNIT



ENTRY



MAIN FLOOR



UPPER FLOOR

Unit 734 Displayed  
Layouts will vary. Ask sales associate for details.

All images used are for illustrative purposes only and are intended to convey the concept and vision for the development/apartments/houses. They are for guidance only, may alter as work progresses and do not necessarily represent a true and accurate depiction of the finished product. All images and dimensions are not intended to form part of any contract or warranty. All measurements are approximate. Ask sales associate for more details.



# COLOUR SCHEMES

BASEBOARD, CASING & DOORS	White
CABINETS	Light Grey
HARDWARE	Brushed Nickel
BACK-SPLASH TILE	White
KITCHEN ISLAND CABINETRY	Dark Grey
LAMINATE FLOORING	Neutral Grey
PRIMARY WALLS	Soft Grey
TILE	White Linear Matte
LIGHTING FIXTURES	Brushed Nickel Accents
QUARTZ COUNTERS	Polished White W/ Vein Accent

## CATALINA



## MEDEIRA



BASEBOARD, CASING & DOORS	White
CABINETS	White
HARDWARE	Brushed Nickel
BACK-SPLASH TILE	White
KITCHEN ISLAND CABINETRY	Light Stain
LAMINATE FLOORING	Greige
PRIMARY WALLS	White
TILE	White Marble
LIGHTING FIXTURES	Brushed Nickel Accents
QUARTZ COUNTERS	Polished White W/ Vein Accent

BASEBOARD, CASING & DOORS	White
CABINETS	White
HARDWARE	Brushed Nickel
BACK-SPLASH TILE	White
KITCHEN ISLAND CABINETRY	Dark Stain
LAMINATE FLOORING	Greige
PRIMARY WALLS	White
TILE	Linen Weave
LIGHTING FIXTURES	Brushed Nickel Accents
QUARTZ COUNTERS	Polished White W/ Vein Accent

## NEWPORT



Images represent similar Westbow product.

All images used are for illustrative purposes only and are intended to convey the concept and vision for the development/apartments/houses. They are for guidance only, may alter as work progresses and do not necessarily represent a true and accurate depiction of the finished product. All images and dimensions are not intended to form part of any contract or warranty. All measurements are approximate. Ask sales associate for more details.

# TOWNHOMES



Open-concept spaces serve as the heart of each unit, complemented by plenty of natural light streaming in through the large windows. The kitchen, living, and dining areas are connected for an easy flow, allowing for seamless transitions. Whether you're cooking up a feast while still being part of the conversation, on the couch with a good book, or hosting a dinner party with friends, you'll appreciate the warmth and comfort of this inviting living space.







### YOUR HOME

- Family oriented, Master Planned Community
- Breathtaking mountain scenery and endless outdoor activities
- Included 2/5/10 Warranty
- Convenient access to Highway 1

### DESIGNER INTERIORS

- Three interior colour schemes available
- Bright, open concept floor plans
- Accented hardware & light fixtures
- Recessed LED lighting throughout main living area
- Stain resistant nylon carpet throughout upper floor
- Versatile laminate v-groove flooring throughout kitchen, dining & living area

### MODERN BATHROOM

- Spa-inspired Master ensuite
- Shaker style cabinets
- Glass shower door with subway tile
- Dual under-mount porcelain sinks in ensuite
- Polished quartz counter-top
- Beautiful tile flooring
- Elegant vanity light fixtures

### GOURMET KITCHENS

- Shaker style cabinets
- Custom cabinet over range
- Polished quartz counter tops
- Subway tile back-splash
- Stainless steel under-mount double sink with pull-down faucet
- Large working island w/ overhang counter for seating
- Pantry storage
- Soft close hardware

### ADDED CONVENIENCE

- Natural gas BBQ line
- Natural gas backup furnace
- Natural gas stove ready
- Two Frost-free hose bibs
- In-wall cable management conduit above fireplace
- Garage with electric opener & pin pad
- Air conditioning included



# TOWNHOMES

## APPLIANCE PACKAGE

### STANDARD PACKAGE



SAMSUNG  
DRYER



SAMSUNG  
WASHER



PANASONIC  
MICROWAVE



SAMSUNG  
DISHWASHER



SAMSUNG  
ELECTRIC RANGE



SAMSUNG  
REFRIGERATOR

### UPGRADE +



SAMSUNG  
REFRIGERATOR  
+ WATER DISPENSER



SAMSUNG  
GAS RANGE



SAMSUNG  
ELECTRIC RANGE

Please ask sales rep for upgrade information and appliance options.



# *Live* FOR ADVENTURE

*Centrally located within the heart of Cedarbrook, 10 acres of park space invites residents to gather with old friends and connect with new ones. This family hub includes a fully fenced dog park and open green space. Children will marvel at the incredible playground area with its large hill-slide. On a hot day, kids can cool off in the splash park. 4 km of natural walking trails connect the vibrant village to outdoor amenities, making nature more accessible than ever.*



Concept rendering of proposed park



# Your **essentials** in one community.

One of the most exciting elements of this master-planned community is the Cedarbrook Village. Dance studios, family restaurants, cafes, a daycare, fitness centres, and an amenity building are a few of the amazing features of this charming village. Grab a coffee on your morning walk or pick up some fresh produce on your way home from work. Everything you need for daily living is conveniently located just steps away.



Be an adventurer  
**10 Acre Park**



Escape the ordinary  
**4km Trail Network**



Space for friends  
**Fenced Dog Park**

With a moderate climate, Chilliwack allows you to enjoy the outdoors all year round. Experience camping at beautiful Cultus Lake or visit Harrison Hot Springs for a day of relaxation. Get lost in the many trails and hiking paths the city and its surrounding forests have to offer. With nature at your doorstep, the possibilities for adventure are endless.



# THE VILLAGE





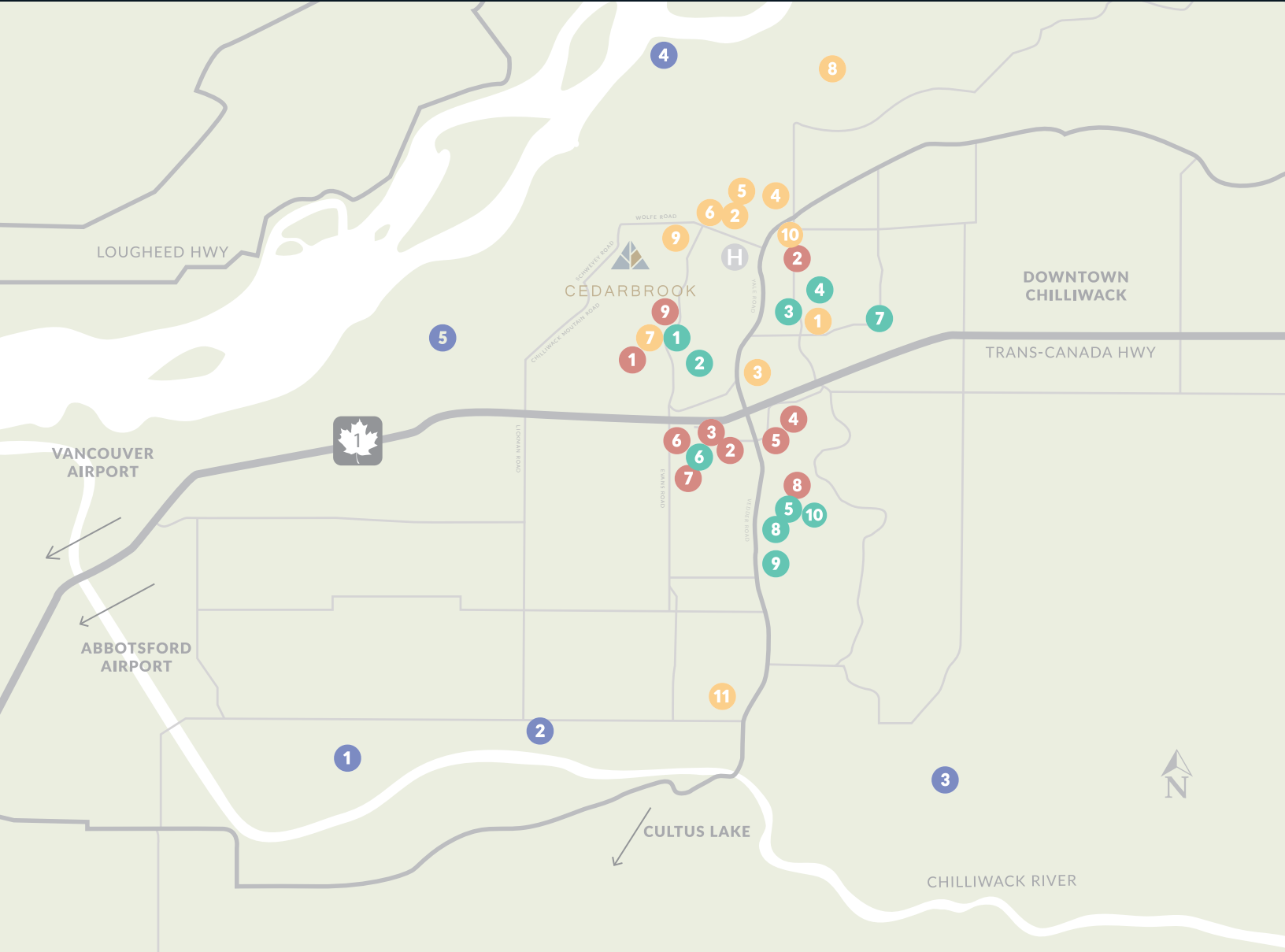
# CEDARBROOK

## SITE MAP

master  
planned  
community



# CHILLIWACK



## NATURE

- 1 Great Blue Heron Nature Reserve
- 2 Vedder River Rotary Trail
- 3 Mt Thom Park
- 4 Island 22 Regional Park
- 5 Hillkeep Regional Park

## RECREATION

- 1 YMCA
- 2 Chilliwack Landing Leisure Centre
- 3 Snap Fitness
- 4 Chillibowl Lanes
- 5 Chilliwack Cultural Centre
- 6 Coliseum
- 7 Cineplex
- 8 Fairfield Park
- 9 Townsend Park
- 10 Chilliwack Library
- 11 Cheam Leisure Centre

## RESTAURANTS

- 1 Original Joes
- 2 Browns Social House
- 3 Greek Islands Restaurant
- 4 Shandhar Hut
- 5 Frankie's Italian Kitchen & Bar
- 6 Earls Kitchen & Bar
- 7 Chances Casino
- 8 Vedder Sushi
- 9 Townhall
- 10 Major League 2

## SHOPPING

- 1 Walmart
- 2 Safeway
- 3 London Drugs
- 4 Hofstede's Country Barn
- 5 Superstore
- 6 Cottonwood Mall
- 7 Chilliwack Mall
- 8 Canadian Tire
- 9 Home Depot





45+ YEARS IN BUSINESS

2000+

HOMES

Built and sold as  
a developer

150+

EMPLOYEES

Within the Westbow  
Group of Companies

## ABOUT WESTBOW

Delivering quality for generations for over 40 years, Westbow has quickly become one of Chilliwack's foremost developers. Our family owned and operated business delivers timeless home designs with many modern features. We have built deep roots in our hometown and strive to further Chilliwack's legacy.

## OUR LOCAL DEVELOPMENTS

PROJECT	HOMES
<i>Cascade</i>	48
<i>Elk Creek Estates</i>	133
<i>Hillcrest Lane</i>	144
<i>Solara</i>	110
<i>Vista Townhomes</i>	27
<i>Webster Crossing</i>	100+

## WHY WE EXIST

Westbow is committed to positively changing the lives of over 1 million people worldwide. We strive to make a difference by actively reinvesting profit from our business efforts. Through partnership with local charities, our commitment provides education and assistance for widows and orphans in the developing world. We also pledge to better the lives locally through our Westbow Gives Back initiative. We build better homes, we build better communities.



---

master planned  
**community**

*liveat***CEDARBROOK.ca**