



SINGLE FAMILY & DUPLEX LIVING

REDISCOVER
TIMELESS
TRADITION

Welcome to the opportunity
to own refined luxury in a
very special community.

Braestone is a collection of thoughtfully designed homes that evoke an essence of timeless tradition and exceptional craftsmanship.

● SHOPS & BUSINESSES

1. Willowbrook Mall
2. Langley Power Centre
3. RioCan Langley Centre
4. Willoughby Town Centre
5. Langley Events Centre
6. Walmart Supercentre
7. Real Canadian Superstore
8. Muriel Arnason Library

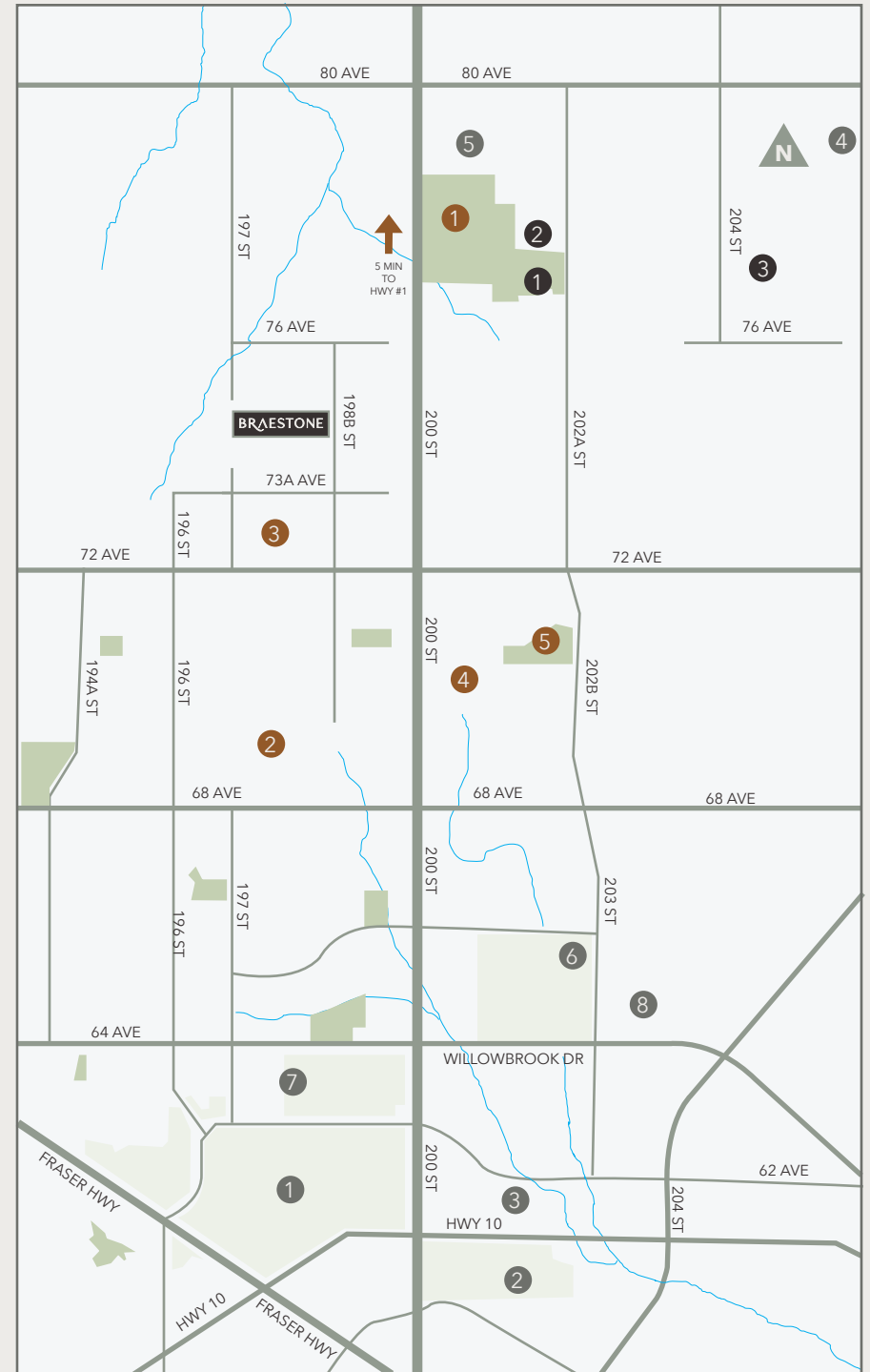


1. RE Mountain Secondary
2. Peter Ewart Middle School
3. Donna Gabriel Robins Elementary



PARKS & REC

1. Willoughby Community Park
2. Routley Park
3. West Willoughby Park
4. Jeffries Brook Greenway
5. R.C. Garnett Park



INTERIORS

- Choice of two designer colour schemes, Grey and Cream
- Open concept floorplans featuring 9' ceilings throughout the main floor, separate private den/study and large covered decks for year-round indoor/outdoor living, *plan specific
- Select homes' great room ceilings are vaulted to upper floor
- Stained fir wood beams in great room ceiling and custom archways into den, pantry and powder room
- Wide plank 6 1/2" engineered hardwood flooring throughout the main floor
- Smooth finish ceilings and modern 5 1/4" flat stock baseboard throughout
- Gas fireplace complete with tile surround and custom stained mantle and flanking wood cabinets/shelving
- Laundry rooms and mud rooms complete with quartz countertop, cabinets, sink and custom built-in bench *plan specific
- Wood shelving throughout all closets.
- Fully trimmed windows and doors throughout
- Fully finished basements with plush carpeting throughout living areas or completed basement suite* featuring durable vinyl plank flooring throughout living areas. *lot specific

PRIMARY SUITES

- Primary bedroom encompasses a suite of spacious rooms including sleeping quarters with vaulted ceiling, walk-in closet and spa-inspired ensuite
- Free standing tub and oversized shower with 10mm frameless glass doors

- Double vanities with quartz countertop, vessel style sinks and round mirrors
- Matte black plumbing fixtures throughout
- Heated hand-set porcelain tile floors
- Walk-in closet with wood shelving and organizers

RELAXING BATHROOMS

- Traditional shaker-style cabinets with soft-close doors and drawers
- Polished quartz countertop with undermount sink
- Full bath/shower tile surround
- High-efficiency elongated toilets with soft-close seats
- Powder room on the main floor with wall tile (80" tall)

KITCHENS

- Oversized gourmet kitchen with open concept living and dining areas
- White shaker-style cabinets with soft-close doors and drawers featuring white oak wood free standing island complete with storage and eating bar
- Pantry cabinets with built-in microwave
- Under cabinet puck lighting
- Stainless steel appliance package featuring Fisher Paykel gas range, French door fridge and dishwasher
- Side bar cabinet, storage and floating shelves
- Arched opening to walk-in pantry, with full wood shelving *plan specific
- Deep, farmhouse-style apron-front sink

- Single-lever, high-arc faucet with integrated spray function
- Garbage/recycle bin pullout next to sink

PEACE OF MIND

- Prewired for alarm system
- Rough-in for built-in vacuum
- Rough-in for gas BBQ
- Future AC add-on rough in completed for forced air heating system
- EV car charger rough in completed in garage (240-volt)
- Triple glaze windows for maximum quietness and efficiency (excluding patio doors and basement windows)
- Heat recovery ventilation for all homes
- Added insulation for sound proofing and maximum efficiency (R22 in the walls)
- Gas boiler for hot water
- 30-year asphalt shingles
- Comprehensive 2-5-10 to homeowner's warranty backed by Travelers company of Canada

Features may vary from home to home depending on floor plan/location. Developer reserves the right to make changes to plans, specifications, features and prices. Measurements taken from architectural drawings and actual plans and square footage may vary. All sizes and dimensions are approximate. E & O.E.



SINGLE FAMILY & DUPLEX LIVING

LOT 43



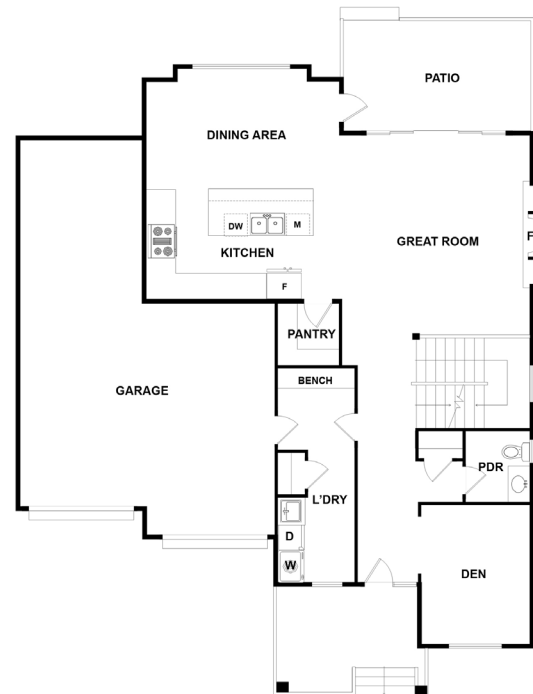
TOTAL SIZE **3,714 SQ FT**

4 BEDROOM
3.5 BATH
DEN
REC ROOM

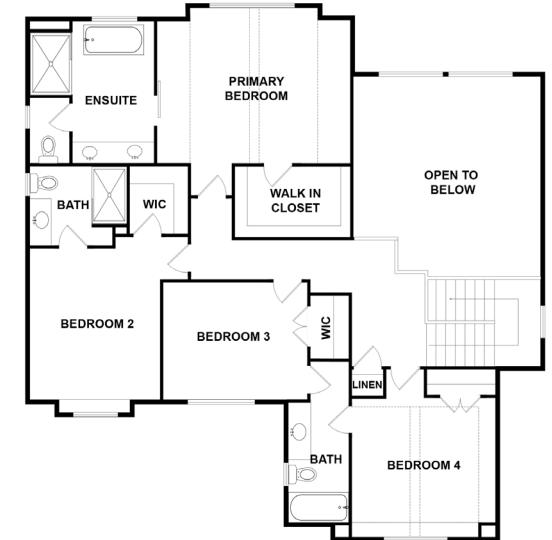
SUITE
1 BEDROOM
1 BATH



LOWER 1195 SQ FT



MAIN 1236 SQ FT



UPPER 1283 SQ FT



BRAESTONELIVING.COM

The developer reserves the right to make modifications and changes to the building design, elevations, dimensions, specifications, features and prices without prior notification. Decks, patios, stairs and windows may vary based on site conditions. All dimensions are approximate and based on architectural measurements. Reverse and/or mirror plans occur throughout the development.



BRAESTONE

SINGLE FAMILY & DUPLEX LIVING

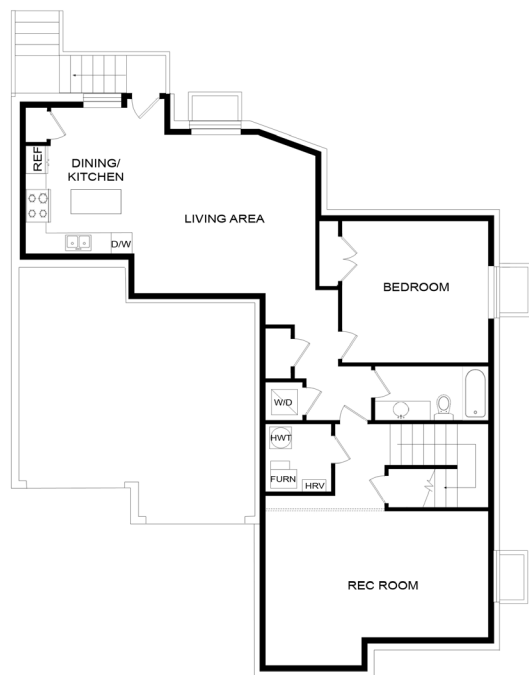
LOT 44



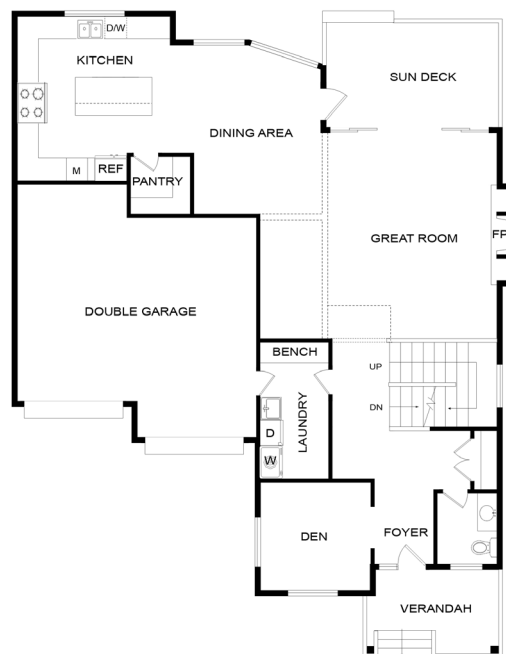
TOTAL SIZE **4,023 SQ FT**

4 BEDROOM
3.5 BATH
DEN
REC ROOM

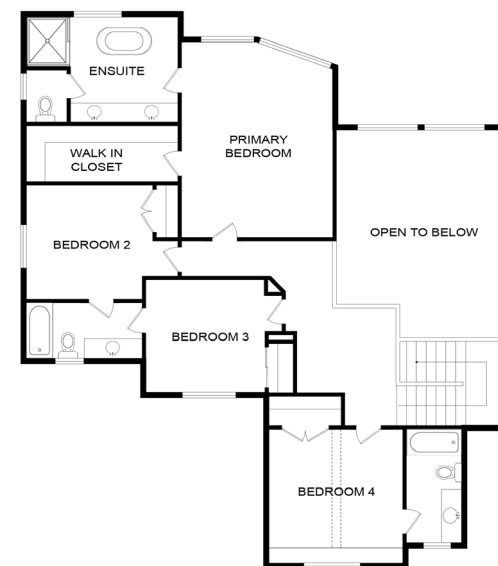
SUITE
1 BEDROOM
1 BATH



LOWER 1378 SQ FT



MAIN 1390 SQ FT



UPPER 1255 SQ FT



SINGLE FAMILY & DUPLEX LIVING

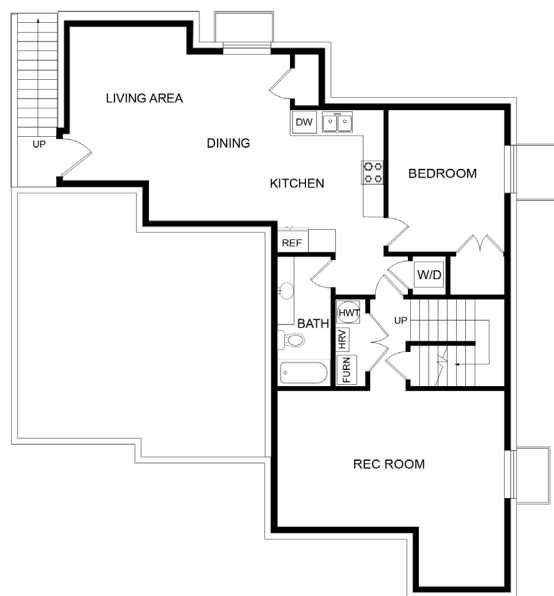
LOT 45



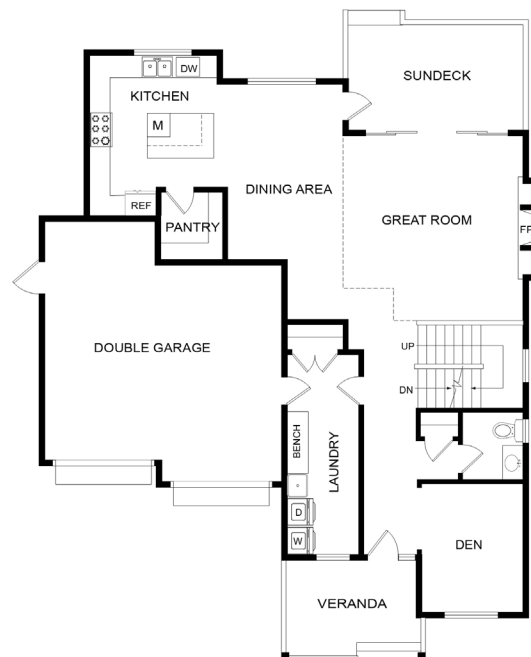
TOTAL SIZE **3,884 SQ FT**

4 BEDROOM
3.5 BATH
DEN
REC ROOM

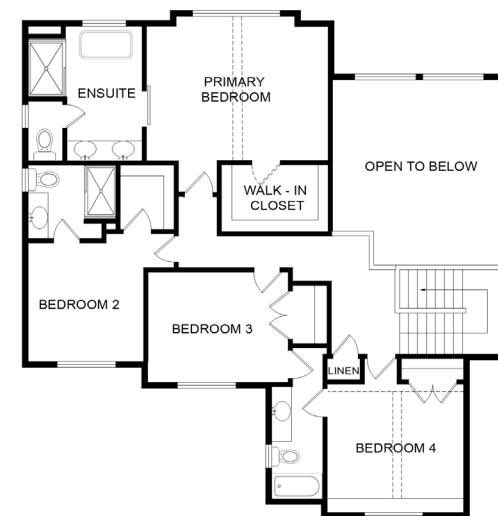
SUITE
1 BEDROOM
1 BATH



LOWER **1307 SQ FT**



MAIN **1318 SQ FT**



UPPER **1259 SQ FT**



BRAESTONELIVING.COM

The developer reserves the right to make modifications and changes to the building design, elevations, dimensions, specifications, features and prices without prior notification. Decks, patios, stairs and windows may vary based on site conditions. All dimensions are approximate and based on architectural measurements. Reverse and/or mirror plans occur throughout the development.

Lanstone Homes is a boutique company that prides itself on personalized care by honouring the values of tradition, outstanding design and craftsmanship.

A second-generation home builder, born and raised in the Langley area, Lanson Foster developed his keen understanding of construction on hundreds of home sites.

Now 30 years later, Lanstone Homes embodies the ideas of community and neighbourhood through thoughtful planning and design.

Built in collaboration with Wesmont Homes



LANSTONE HOMES

BREAKSIDE
REAL ESTATE GROUP



WESMONT