



*lilibet*

HOMES AT QUEEN ELIZABETH PARK

make  
it your  
home

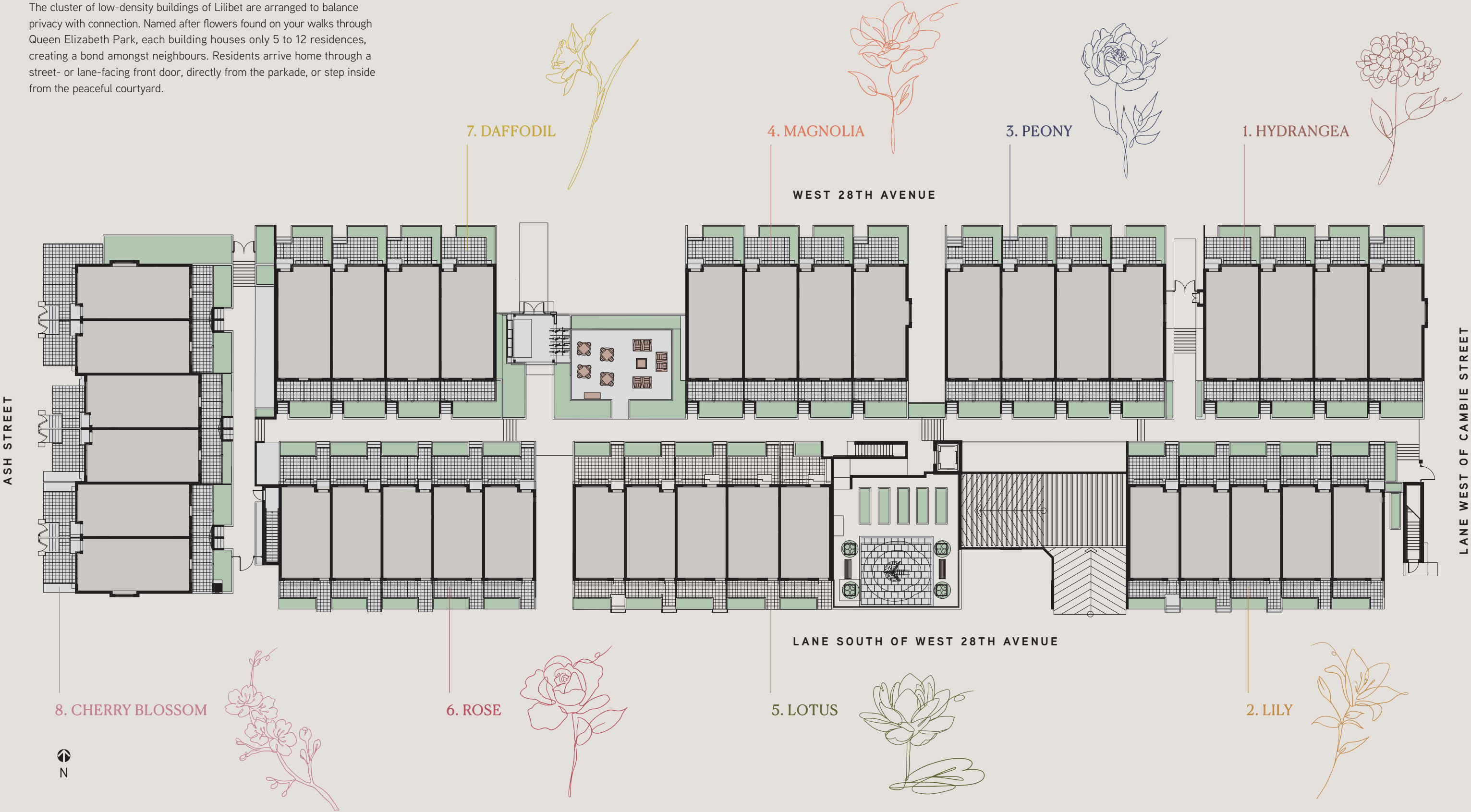


All renderings shown are artistic interpretations and are for illustration purpose only and are not to be relied upon. E.&O.E.

On a quintessential Westside street, with trees lining the sidewalks, Lilibet is nestled in a serene residential neighbourhood. Across the street from Queen Elizabeth Park, only one block from vibrant Cambie Street, and a less than ten-minute walk to dynamic Main Street, community gems are a short bike, stroll, SkyTrain ride or drive away.

# the perfect eight

The cluster of low-density buildings of Lilibet are arranged to balance privacy with connection. Named after flowers found on your walks through Queen Elizabeth Park, each building houses only 5 to 12 residences, creating a bond amongst neighbours. Residents arrive home through a street- or lane-facing front door, directly from the parkade, or step inside from the peaceful courtyard.







All renderings shown are artistic interpretations and are for illustration purpose only and are not to be relied upon. E.&O.E.

# for your life

The kitchen, at the centre of the home, is intentionally designed to become a natural gathering place for family and friends. Sophisticated appliances, including a gas cooktop, add a gourmet touch to every meal. Contemporary matte-black accents make a statement against a clean aesthetic. Intelligently designed storage elements reduce clutter and create space for all your belongings. Residents will be sure to enjoy both style and function in a home where comfort meets convenience.







All renderings shown are artistic interpretations and are for illustration purpose only and are not to be relied upon. E.&O.E.

# well-designed one bedroom garden homes



All renderings shown are artistic interpretations and are for illustration purpose only and are not to be relied upon. E.&O.E.

One bedroom garden homes are efficiently designed to be livable without compromise. Residents can add their own personal touches to modern and understated interiors, locally curated by BAM Interior. Over-height airy ceilings and oversized windows equipped with roller blinds invite an abundance of natural light, while engineered hardwood floors flow throughout every home to carry your steps for years to come.





A modern rooftop patio with a fire pit, seating, and a view of mountains. The patio features a large, rectangular fire pit with a glass top and a fire burning inside. Two modern, light-colored sofas with blue and beige cushions are positioned on either side of the fire pit. In the background, there is a dining table with white chairs and a large, stainless steel barbecue. The patio is enclosed by a dark metal railing. The view from the patio shows a cityscape and snow-capped mountains in the distance under a clear blue sky. The patio floor is made of large, light-colored tiles. On the left wall, there are several circular planters with various plants. A large potted plant is in the foreground on the right.

# your private oasis

Enjoy the fresh Vancouver air from private outdoor spaces in all residences at Lilibet with oversized garden level patios or a rooftop haven that crowns your home. In most homes, private outdoor living areas are equipped with space and connection for a gas barbeque, perfect for hosting dinner parties with family and friends. Residents will enjoy the privacy to bask in the afternoon sun or catch up on your to-do list while enjoying the views of the City or North Shore Mountains. Life expands with private outdoor space like this.

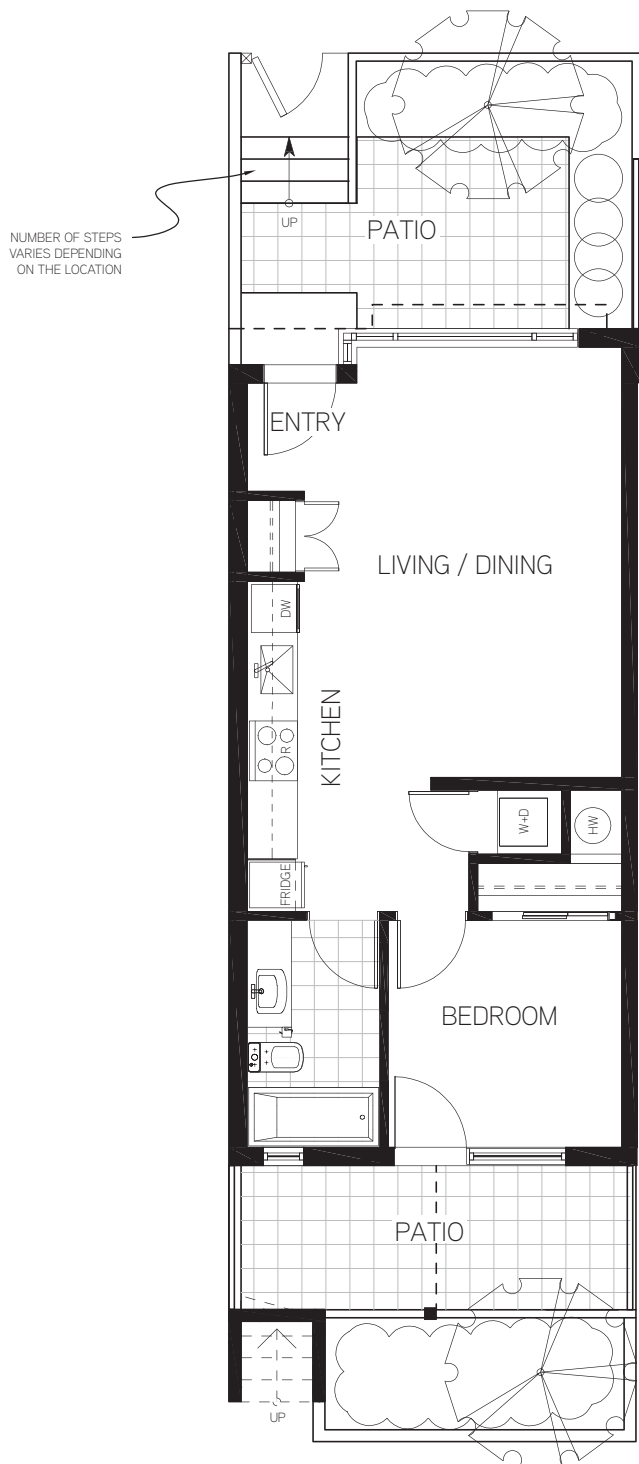


# Sample Garden Home

## 1 bed 1 bath

interior	576 sf
exterior	361 sf
total	937 sf

*lilibet*  
HOMES AT QUEEN ELIZABETH PARK



BROUGHT TO YOU BY



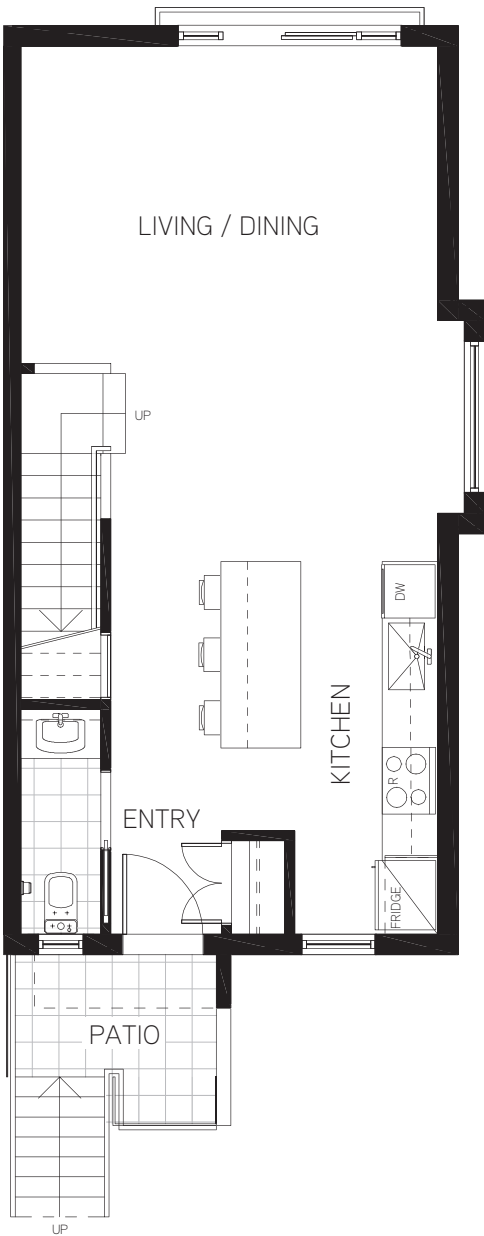
DEVELOPMENT  
GROUP



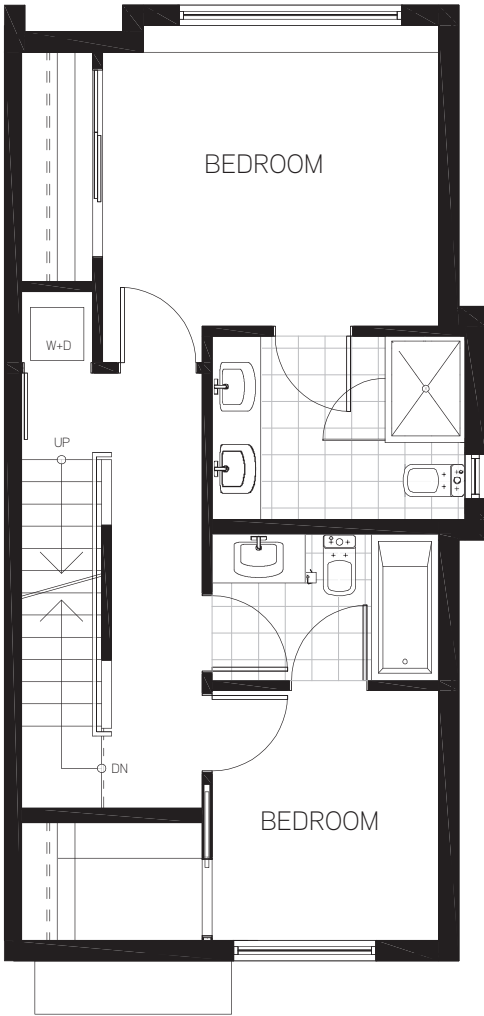
Sample Townhome

2 bed 2.5 bath

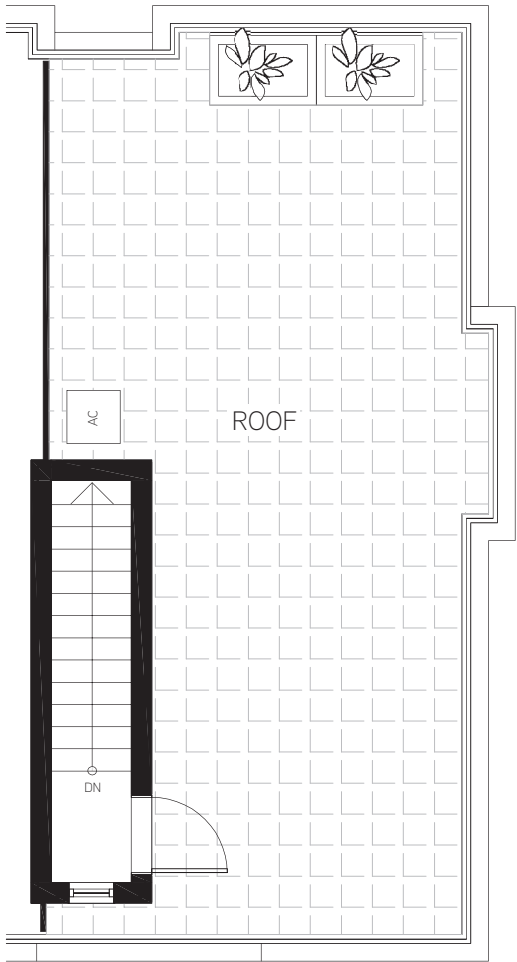
interior	1,260 sf
exterior	555 sf
total	1,815 sf



LEVEL 2



LEVEL 3

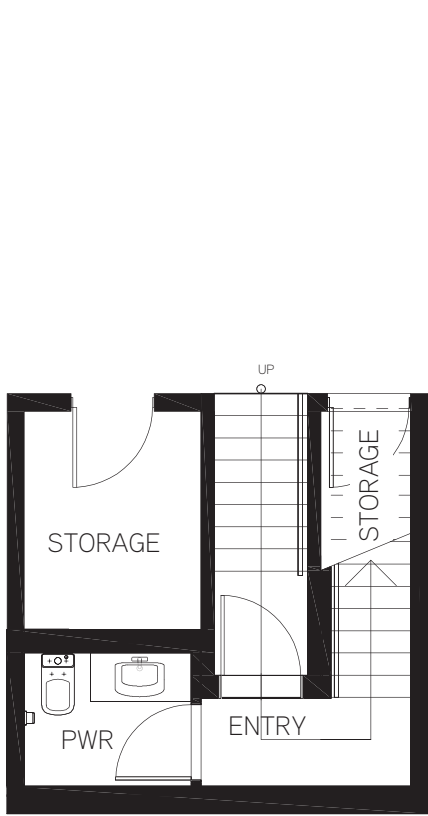


ROOF

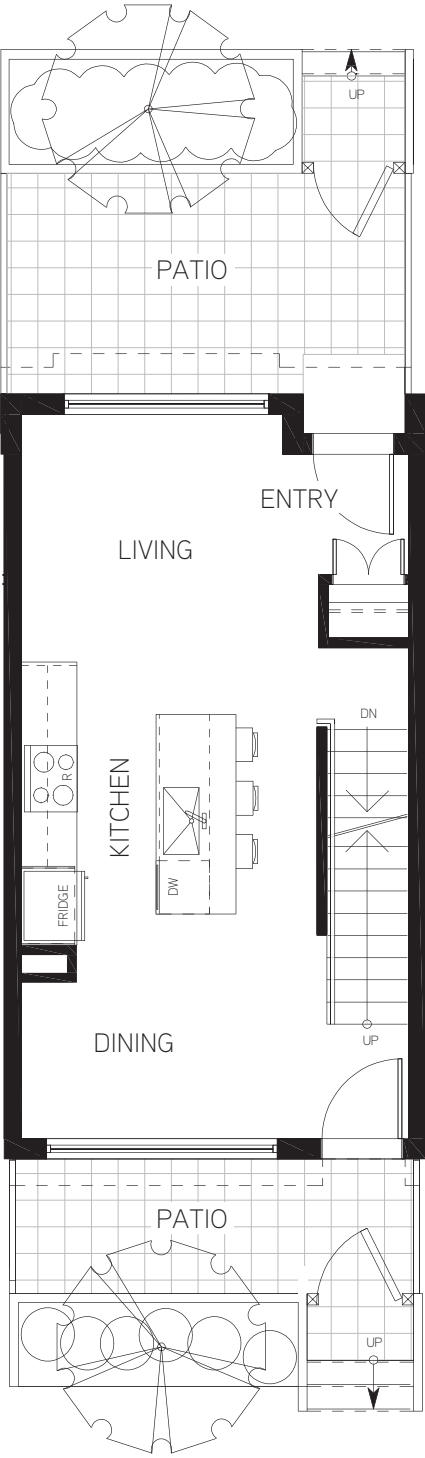


Sample Townhome  
3 bed 2.5 bath

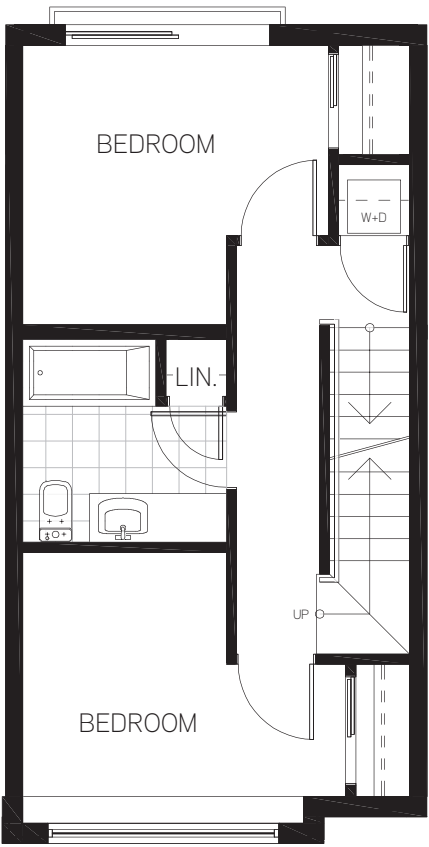
interior	1,308 sf
exterior	422 sf
total	1,730 sf



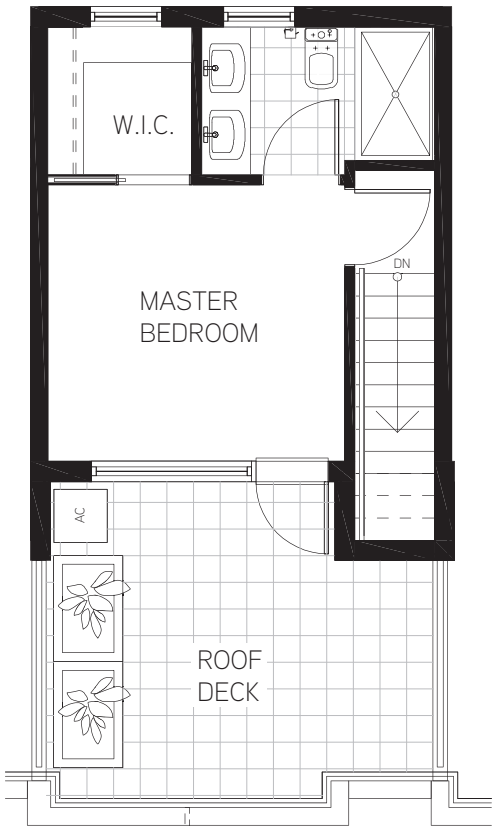
PARKING LEVEL



LEVEL 1



LEVEL 2



LEVEL 3

DOWNTOWN  
VANCOUVER

YALETOWN

OLYMPIC VILLAGE

SOUTH GRANVILLE

SHAUGHNESSY

OAKRIDGE

ENGLISH BAY

KITSILANO BEACH

KITSILANO

GRANVILLE  
ISLAND

FALSE CREEK

FALSE CREEK SEAWALL

W 4TH AVE

W BROADWAY AVE

W 12TH AVE

W 16TH AVE

KING EDWARD  
STATION

W KING EDWARD AVE

W 33RD AVE

W 41ST AVE

W 49TH AVE

FUTURE OAKRIDGE  
SHOPPING CENTRE

LANGARA  
GOLF COURSE

CITY SQUARE  
SHOPPING CENTRE  
10 MIN WALK

VANCOUVER  
GENERAL HOSPITAL  
10 MIN WALK

EDITH CAVELL  
ELEMENTARY  
K-6 / 5 MIN WALK

CAMBIE CORRIDOR  
10 MIN WALK

YORK HOUSE  
SCHOOL  
K-8 / 10 MIN WALK

BC CHILDREN'S  
HOSPITAL  
5 MIN WALK

*lilibet*

HILLCREST COMMUNITY  
CENTRE  
5 MIN WALK

RILEY PARK  
NAT BAILEY  
STADIUM

QUEEN  
ELIZABETH PARK  
1 MIN WALK

ERIC HAMBER  
SECONDARY  
8-12 / 5 MIN WALK

VANCOUVER  
COLLEGE  
K-8 / 10 MIN DRIVE

VANDUSEN  
BOTANICAL  
GARDEN

SOUTH MAIN STREET  
10 MIN WALK

CAMBIE CORRIDOR  
10 MIN WALK

- Rain or Shine Ice Cream
- Lemonade Bakery
- JJ Bean Coffee Roasters
- Save-on-Foods
- Shoppers Drug Mart
- Whole Foods Market
- Cactus Club

HILLCREST  
COMMUNITY CENTRE  
5 MIN WALK

- Fitness & Aquatic Centre
- Children's Programs
- Adult Fitness Programs
- Childcare Centre
- Playground & Park Space
- Skating Rink

QUEEN ELIZABETH PARK  
1 MIN WALK

- Seasons in the Park Café
- Pitch and Putt Golf Course
- Tennis and Basketball Courts
- Lawn Bowling
- Walking, Running & Cycling Trails
- Park Space
- Off Leash Dog Park

SOUTH MAIN STREET  
10 MIN WALK

- Nesters Market
- The Acorn Restaurant
- MEET on Main
- Chickpea Restaurant
- The Juice Truck
- Nineteen Ten
- Coco et Olive



An aerial photograph of a city, likely Vancouver, taken from a high vantage point. The foreground is filled with lush green trees. Below them, a dense residential area with many houses and some larger apartment buildings is visible. In the middle ground, the city skyline is illuminated by the warm, golden light of the setting sun. The background features a large body of water and a range of mountains, some with snow-capped peaks, under a clear blue sky.

an  
inspiring  
point  
of view

AT LILIBET, BECOME CLOSER TO NATURE,  
COMMUNITY, AND FAMILY IN A HOME INTELLIGENTLY  
DESIGNED TO ENHANCE YOUR LIFESTYLE.



**Intergulf.com/lilibet**

BROUGHT TO YOU BY



DEVELOPMENT  
GROUP

MARKETED BY



PRESENTATION GALLERY OPEN BY APPOINTMENT

3317 CAMBIE STREET VANCOUVER • 604.879.0030 • LILIBET@VIRANI.CA